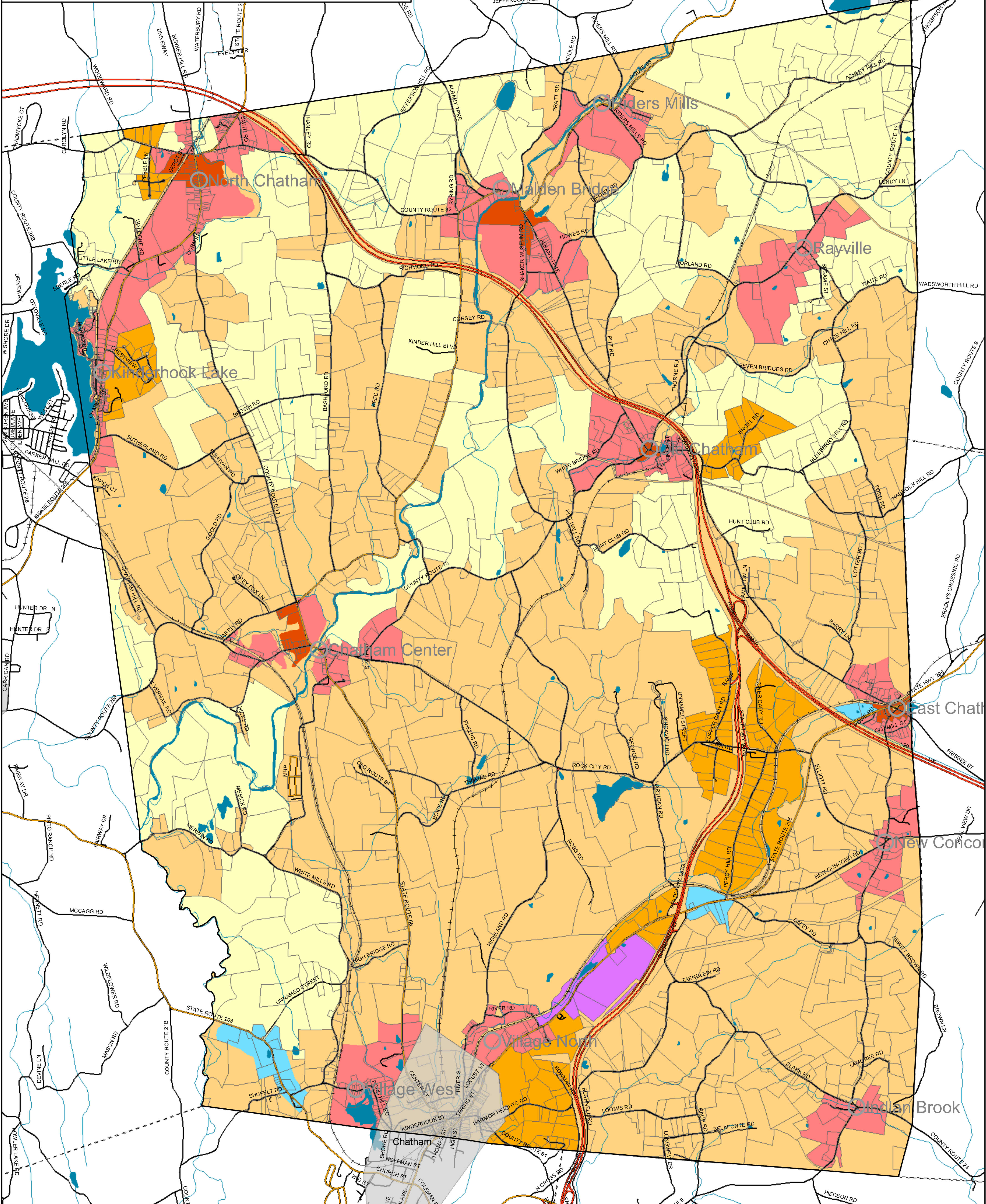


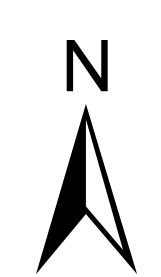
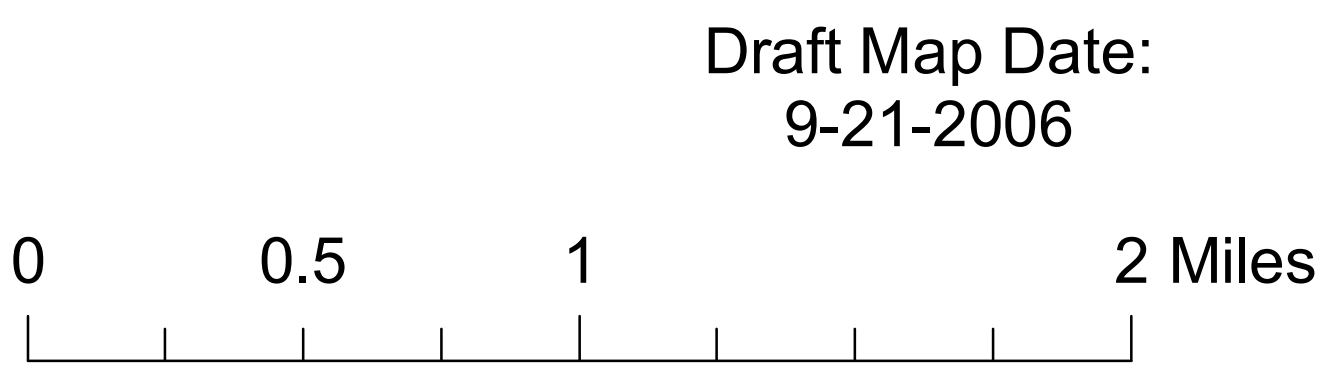
# Town of Chatham

## Columbia County, NY



### Conceptual Zonig Districts Draft Version 1

- Town Boundary
- Village Boundaries
- Property Boundaries
- Water Features
- Streams
- Possible Hamlet Districts v1
- Possible Rural-3 District v1
- Possible Rural-2 District v1
- Possible Rural-1 District v1
- Possible Commercial Districts v1
- B
- I



**Community Planning &  
Environmental Associates**

Nan Stolzenburg, AICP - [www.planningbetterplaces.com](http://www.planningbetterplaces.com)  
152 Stolzenburg Road, Berne, NY 12023  
Don Meltz, Planning and GIS - [www.donmeltz.com](http://www.donmeltz.com)