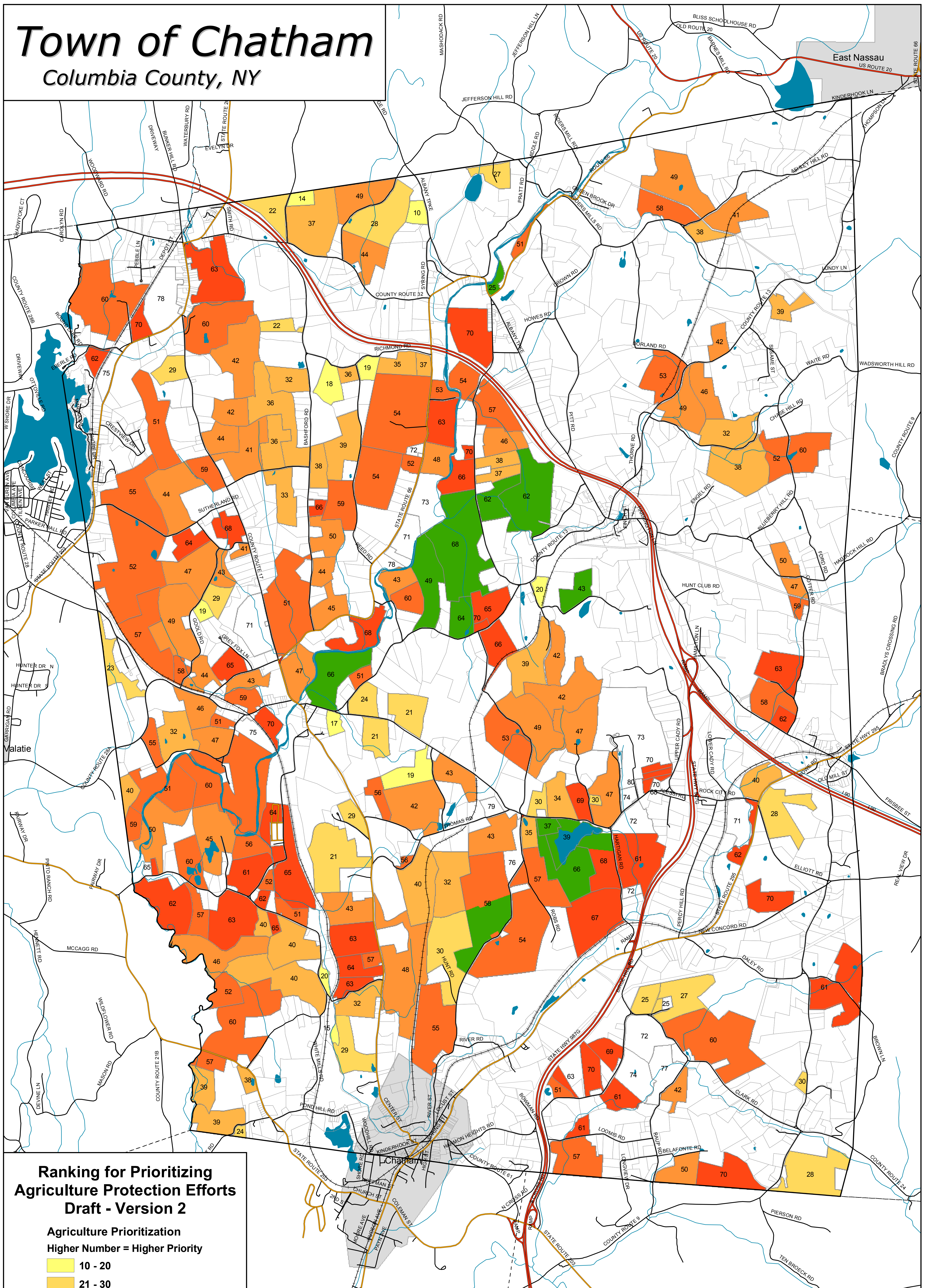


# Town of Chatham

## Columbia County, NY



### Ranking for Prioritizing Agriculture Protection Efforts

#### Draft - Version 2

Agriculture Prioritization  
Higher Number = Higher Priority

- 10 - 20
- 21 - 30
- 31 - 40
- 41 - 50
- 51 - 60
- 61 - 70
- 71 - 80
- Already Protected



0 0.5 1 2 Miles

Draft Map Date:  
11-6-2006



Community Planning &  
Environmental Associates

Nan Stolzenburg, AICP - [www.planningbetterplaces.com](http://www.planningbetterplaces.com)  
152 Stolzenburg Road, Berne, NY 12023  
Don Meltz, Planning and GIS - [www.donmeltz.com](http://www.donmeltz.com)